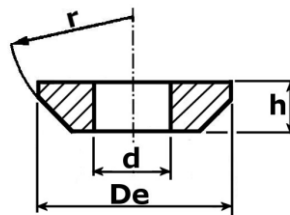


## RONDELLE TORNITE CONVESSE

DIN 6319 C



Per bullone	d	De	h	r	Kg~ per 1000 Pz
<b>M6</b>	6,4	12	2,3	9	1,000
<b>M8</b>	8,4	17	3,2	12	2,500
<b>M10</b>	10,5	21	4	15	5,000
<b>M12</b>	13	24	4,6	17	7,000
<b>M14</b>	15	28	5	22	10,000
<b>M16</b>	17	30	5,3	22	12,000
<b>M20</b>	21	36	6,3	27	23,000
<b>M24</b>	25	44	8,2	32	42,000
<b>M30</b>	31	56	11,2	41	87,000
<b>M36</b>	37	68	14	50	184,000
<b>M42</b>	43	78	17	58	297,000
<b>M48</b>	50	92	21	67	525,000